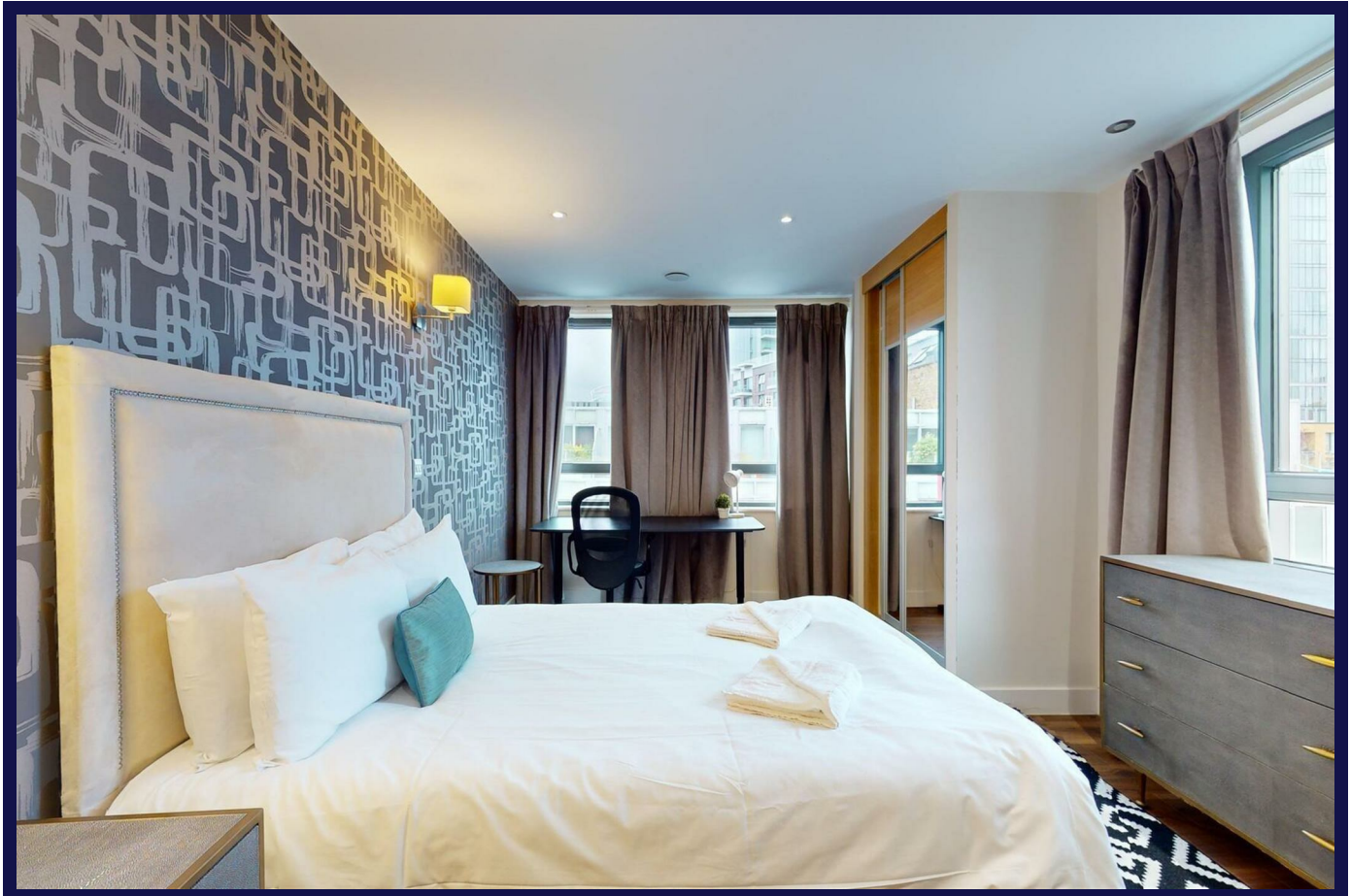


## Back Church Lane, London, E1 1FL



### Features:

- **Luxury 3 bed 2 bath Flat**
- **Luxury Designed**
- **Prime Location**
- **Fully Fitted Kitchen**
- **Balcony**
- **Lift**
- **Wooden Floors**
- **Washing Machine/Dryer**
- **Dishwasher**
- **Close to Transport Links**

### Description:

Foundation Estates are delighted to introduce a newly built property in fashionable Aldgate East quarter with 42 modern state-of-the-art interior designed 3 bedroom apartments with balconies. All our apartments are furnished to the highest standard and have open plan fully integrated kitchens. Luxury features include contemporary cooling and heating system, double-glazed windows, fitted wardrobes in the bedrooms and heated floors.

With Liverpool Street, Aldgate, Bank and Whitechapel Stations all a short distance away you will have easy access to 9 different lines of London Underground's network, plus the Stansted Express for those holiday getaways! It's just a short walk to the City yet close to the East End's trendy Shoreditch and Brick Lane areas.

All residents can also enjoy breathtaking London views from the amazing roof garden which is made up of laid grass and colourful plants to give the garden a lovely feel and a restful place to sit and enjoy your leisure time. Additionally, the property has a built in secure cycle racks.

NO ADMIN FEES APPLY

**£3,900 PCM**