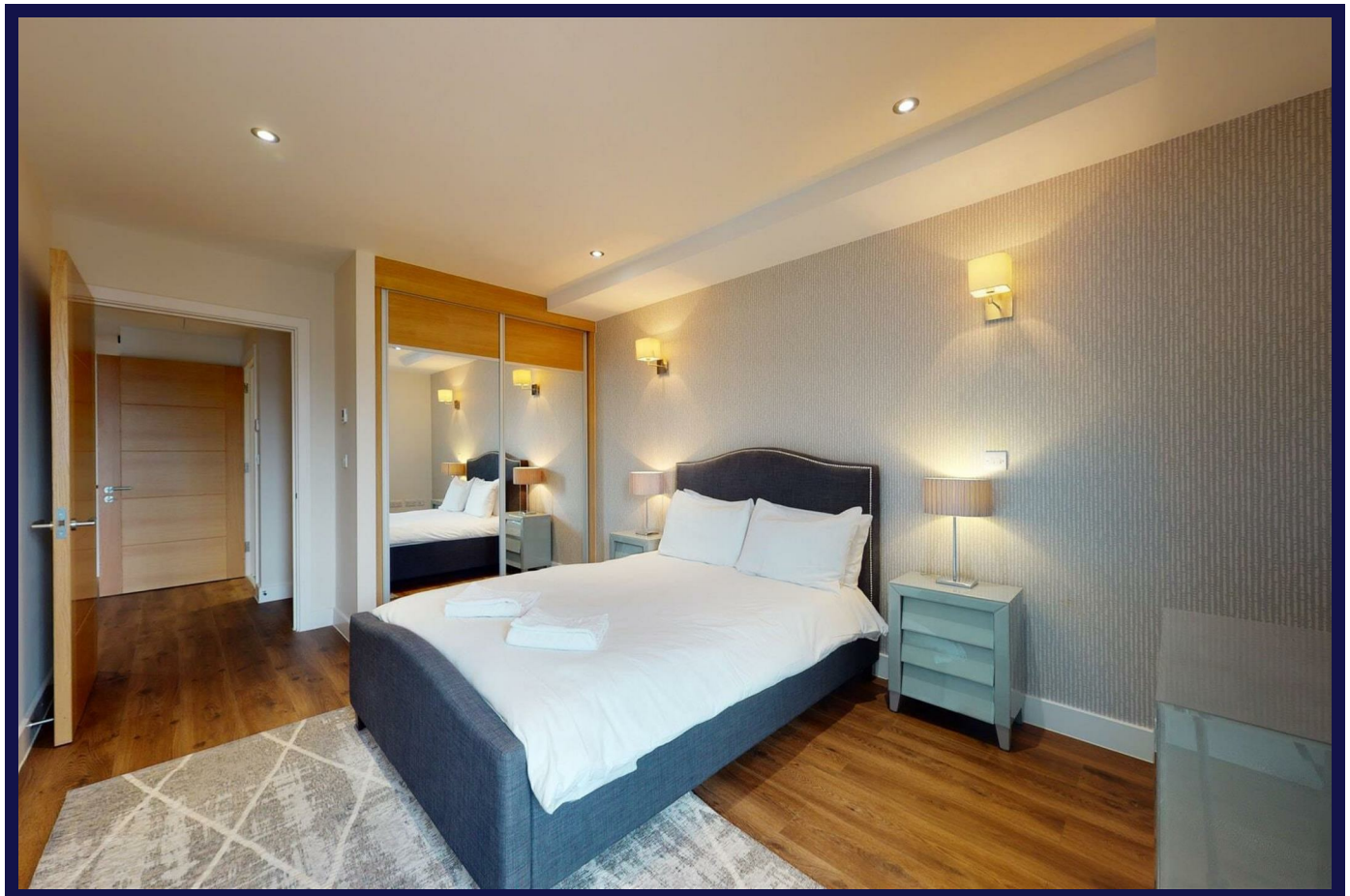


## Back Church Lane, London, E1 1FL



### Features:

- **Luxury 1 bed 1 bath Flat**
- **Central London**
- **Fully Furnished**
- **Open plan living/dining and Kitchen**
- **Kitchen fully equipped with all mod cons**
- **Close Proximity to amenities**
- **Walking distance to Aldgate and Aldgate East Station**

### Description:

Presenting a newly-built flat to rent in Whitechapel. The property is on Back Church Lane and comprises 1 bedroom and 1 bathroom.

Available from the 17th of September, covering 584 sq. ft. in living space and situated on the fourth floor with a lift, this modern property is currently furnished and comes with big windows and ample storage. The property also benefits from a private balcony, wood floors and abundant natural light throughout, as well as a concierge. Further features and amenities include:

- Open plan kitchen with dishwasher
- Freezer
- Washer/Dryer
- Student-friendly

The flat has a current EPC rating of B and is under the Council Tax band E. Located on a quiet street and close to local amenities, the property is located only moments away from Aldgate East and Whitechapel tube station.

EPC Rating: B

**£2,491 PCM**